

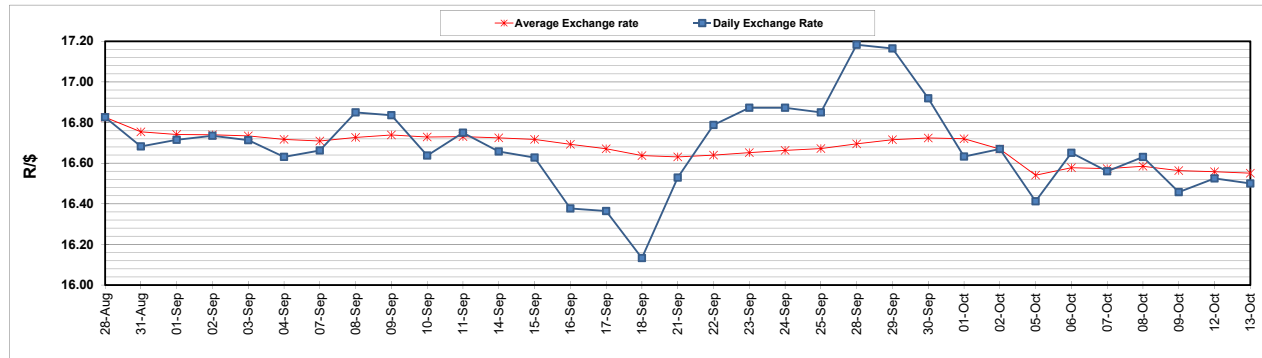
	PETROL 95 ULP	PETROL 93 ULP & LRP	DIESEL 0.05%	DIESEL 0.005%	ILL. PAR.
GAUTENG PUMP PRICE (SA c/l) AS FROM 07/10/2020	1,486.000	1,466.000	-	-	-
WHOLESALE PRICE (SA c/l) AS FROM 07/10/2020	-	-	1,237.560	1,238.960	640.828
SINGLE NATIONAL MAXIMUM RETAIL PRICE	-	-	-	-	798.000
BASIC FUEL PRICE - 13/10/2020 (SA c/l)	521.025	510.199	500.365	502.943	469.023
PRESS RELEASE CONTRIBUTION TO BFP 07/10/2020 - 13/10/2020 (SA c/l)	533.470	523.470	486.630	488.030	436.128
UNIT OVER/(UNDER) RECOVERY - 13/10/2020 (SA c/l)	12.445	13.271	(13.735)	(14.913)	(32.895)
AVERAGE BASIC FUEL PRICE 02/10/2020 - 13/10/2020	528.619	517.697	496.176	498.080	465.093
AVERAGE UNIT OVER/(UNDER) RECOVERY 02/10/2020 - 13/10/2020	16.851	14.398	24.204	24.825	(0.465)

### ANALYSIS MOVEMENT OF AVERAGE OVER/(UNDER) RECOVERY

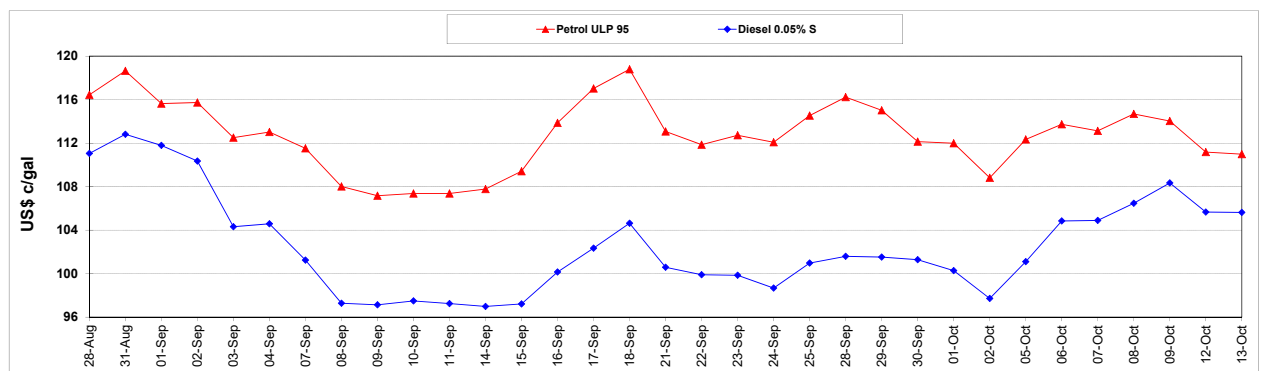
	PETROL 95	PETROL 93	DIESEL 0.05%	DIESEL 0.005%	ILL. PAR.
- MOVEMENT IN INTERNATIONAL PRODUCT PRICES	11.431	9.090	19.117	19.718	(5.234)
- MOVEMENT IN EXCHANGE RATE	5.420	5.308	5.087	5.107	4.769
AVERAGE UNIT OVER/(UNDER) RECOVERY 02/10/2020 - 13/10/2020	16.851	14.398	24.204	24.825	(0.465)

**R/\$ EXCHANGE RATE - (R/\$16.5000 - 13/10/2020)**

### EXCHANGE RATE USED IN BASIC FUEL PRICE



### INTERNATIONAL PRODUCT PRICES OF BASKET USED IN BASIC FUEL PRICE



### BASIC FUEL PRICE IN SA CENTS PER LITRE

